

# Notes for patterns and sizes:

## ★ About patterns:

- All patterns include seam allowance. Each seam allowance varies. Please refer to the finished garment lines on the pattern and/or the instructions.
- A4 size paper is used. Please print as 100%.
- On the first page of the pattern, there is 10cm x 10cm square. Please use this square to confirm proper proportions for printing.
- Please attach the pieces together after printing all pages.
- Nested PDF: All sizes' lines are visible on the pattern. Finished garment lines are only available for the smallest size.
- Layered PDF: You can print selected size patterns by using Acrobat layer function. Finished garment lines are available for all sizes. Please refer to Adobe help page for how to use layer function.  
( [http://help.adobe.com/en\\_US/Reader/8.0/help.html?content=WS58a04a822e3e50102bd615109794195ff-7c5d.html](http://help.adobe.com/en_US/Reader/8.0/help.html?content=WS58a04a822e3e50102bd615109794195ff-7c5d.html) )

## ★ About sizes:

- Sizes are based on Japanese / European sizes. Japanese body type is used for the bodice pattern.

### • Size chart

Japanese size	7	9	11	13
European size	36	38	40	42
US size	4	6	8	10
UK size	8	10	12	14

### • Our company's body measurements

[ Women ]	36 (JPN7)	38 (JPN9)	40 (JPN11)	42 (JPN13)
Bust	79cm	83cm	87cm	91cm
Waist	60cm	64cm	68cm	72cm
Hip	87cm	91cm	95cm	99cm
Height	156-158cm	158-162cm	162-166cm	162-166cm

[ Toddler ]	100	110	120	130	140
Chest	52cm	56cm	60cm	64cm	68cm
Waist	50cm	52cm	54cm	56cm	58cm
Hip	58cm	62cm	66cm	70cm	74cm
Height	95-105cm	105-115cm	115-125cm	125-135cm	135-145cm

[ Kid Boy / Girl ]	140	150	160
Chest	68cm / 72cm	74cm / 76cm	80cm / 80cm
Waist	58cm / 56cm	62cm / 59cm	66cm / 62cm
Hip	74cm / 78cm	78cm / 82cm	82cm / 86cm
Height	135-145cm	145-155cm	155-165cm

- Generally speaking, Japanese is small framed compared to European & American. Due to that, we recommend to choose a larger size if you are in doubt. You may also print patterns a few % larger.

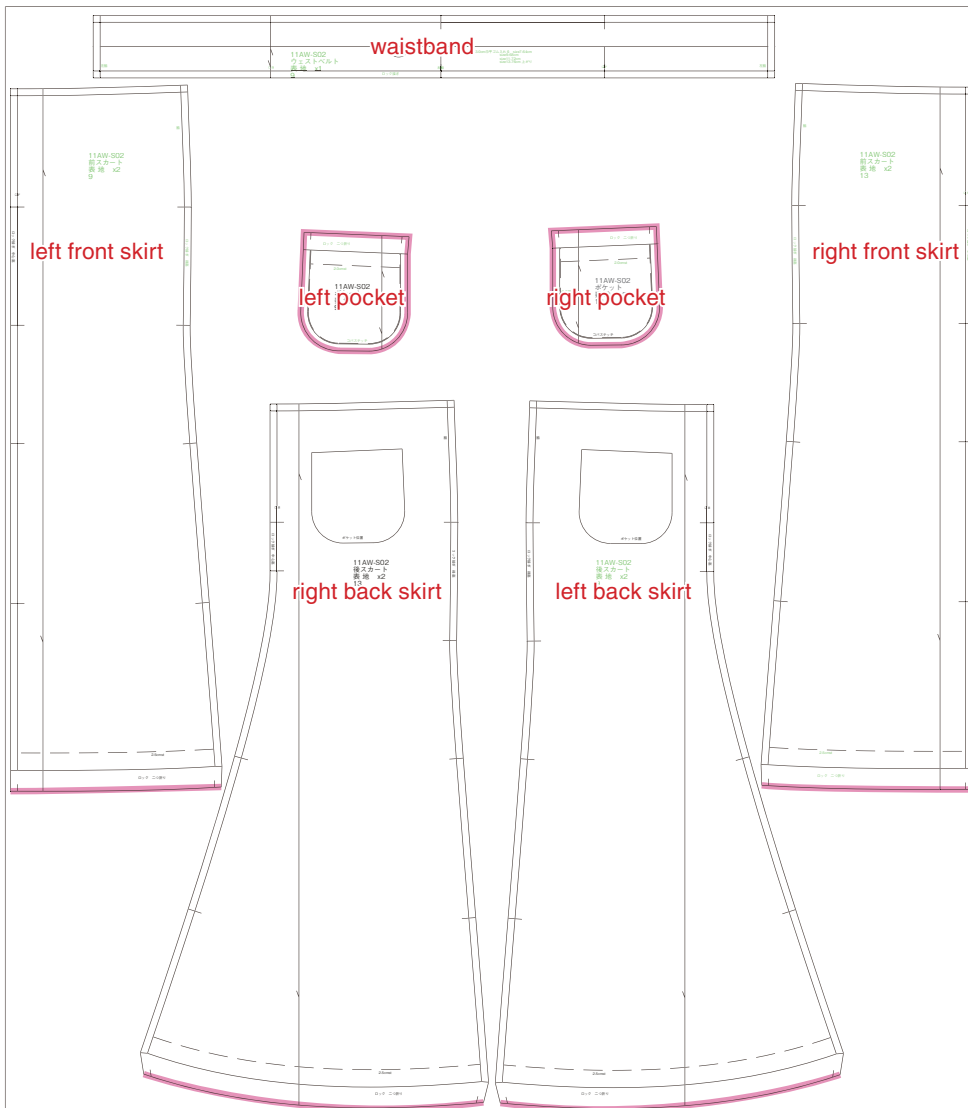
## ★ About support:

- We sometime update the instruction without notification. You can always download the newest instruction from [Instructions] page in our website. (<https://tamanegikobo.ocnk.net/page/7>)
- If you have questions, please contact us from [Contact us] page. (<https://tamanegikobo.ocnk.net/contact>) It may take 1-2 business days to receive a reply. Because our staffs are non-native English speakers, replying will be in simple English. Please be patient.



## Construction

Shell fabric 140cm/ 1.6m length



### • Cutting

Please refer to the layout for cutting. You may mark center side of pockets & skirt panels with stickers or some other like method to prevent confusion. Add notches (cut 2-3mm in the seam allowance).

\*Some knits run from the point of the notch cut. In that case, you may use chalk to mark notches.

Mark pocket placements with chalk or tailor tacks.

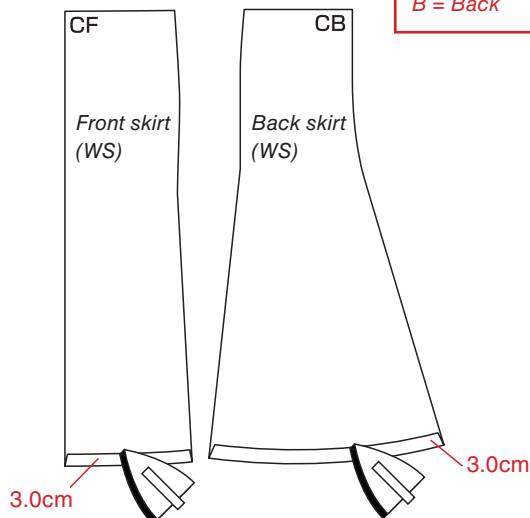
### • Overlock finish (pink line)

Overlock finish along the pink line (Front & back skirt hem & pocket). If the fabric does not fray after washing, you can omit overlock finish.

## Ironing

### • Front & back skirt hem

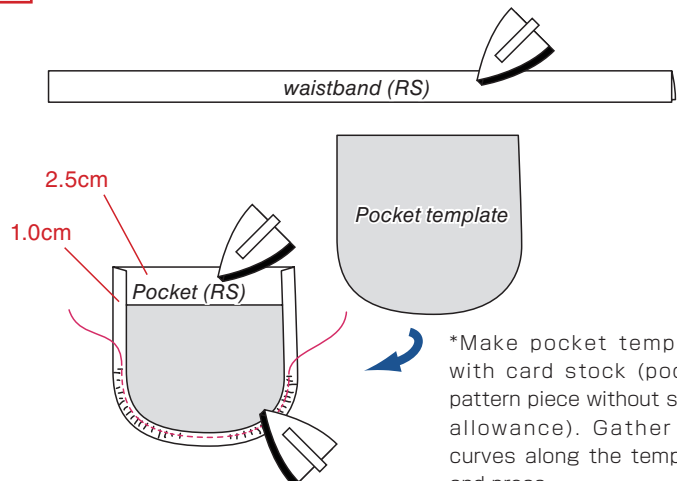
Fold hem and press.



*RS = Right side*  
*WS = Wrong side*  
*F = Front*  
*B = Back*

### • Waistband & pockets

Fold waistband in half and press. Fold pocket and pocket opening and press.

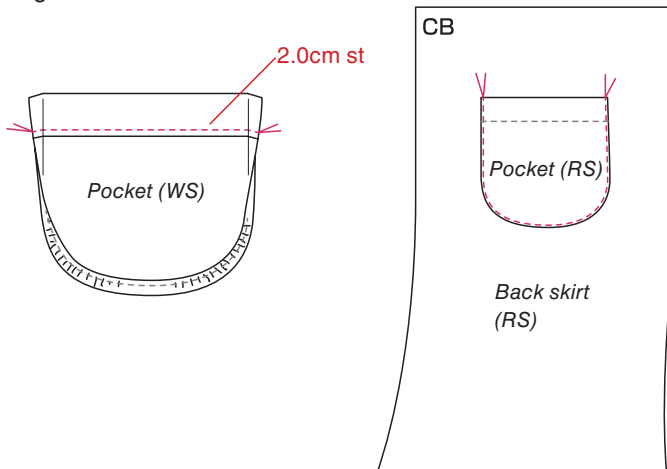


\*Make pocket template with card stock (pocket pattern piece without seam allowance). Gather the curves along the template and press.

## Construction

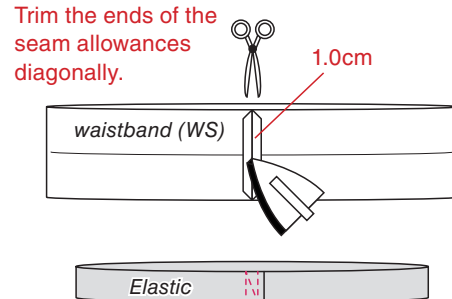
### • Pocket

Sew pocket opening.  
Place pocket on the back panel and apply pocket with edgestitch.



### • Waistband

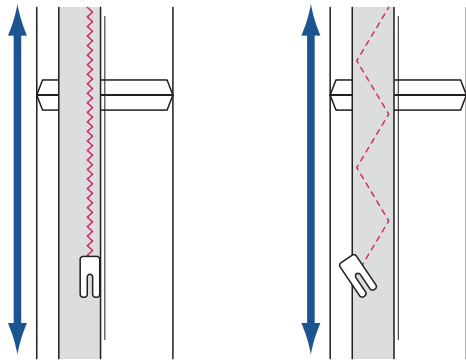
Sew waistband ends right sides together. Open the seam and press. Cut elastic in waist measurement plus seam allowance. Overlap the ends and sew. If you use softer elastic with more stretch, you should cut elastic a bit shorter. You may test the elastic stretchness.



Divide waistband & elastic in 8 equal distance and mark.  
Match the edge of elastic on the folded edge of waistband.  
Place elastic on the inside waistband & pin at the marking.  
Stretch between pins and sew elastic onto inside waistband.  
Fold waistband at the fold line, baste stitch on the edge so that the waistband does not twist.

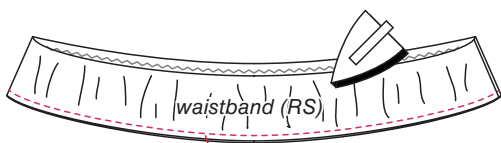
### • Center front / back seam

Put front skirts at center seam right sides together and overlock stitch.  
Put back skirts at center seam right sides together and overlock stitch.  
Trim excess seam allowance when overlock stitching.  
Press seam allowance towards left.

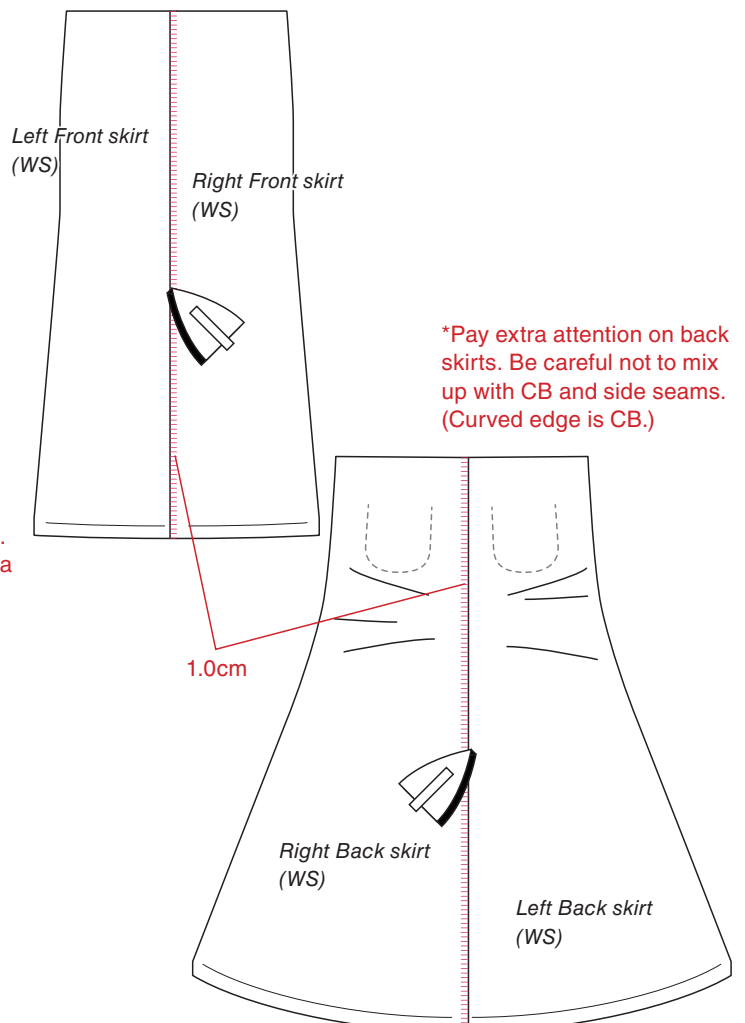


Zigzag stitch – Stretch elastic between pins and sew

Lock stitch – Stretch elastic between pins and sew zigzag. It is easier to sew if you draw a zigzag line on the elastic first.

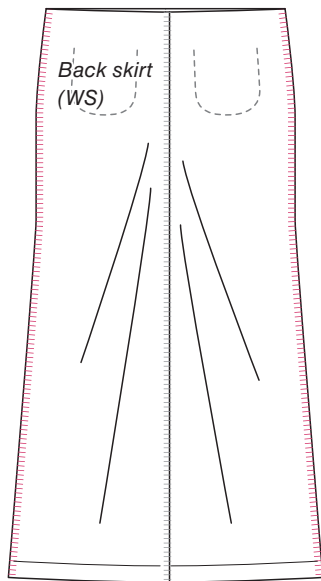


Baste stitch should be on the far end of the edge because it will be trimmed off when overlock stitching.



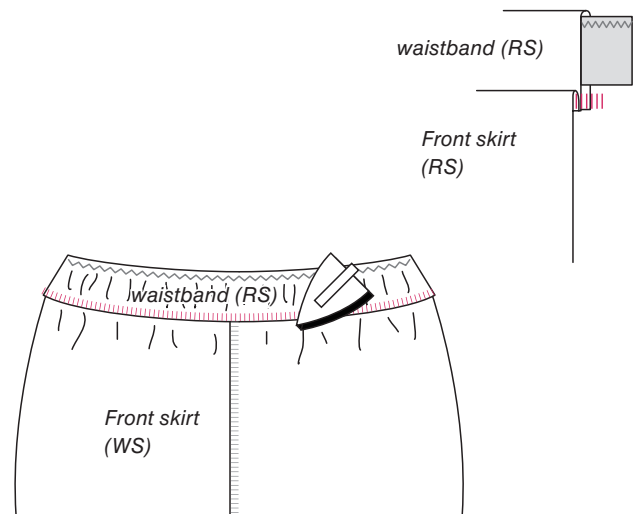
- **Side seam**

Overlock stitch front and back skirt right sides together. Press seam allowance towards back.



- **Waistband**

Overlock stitch waistband and skirt right sides together. Press seam allowance towards skirt.



- **Hem**

Try on the skirt with shoes. Adjust the hem length if needed. Fold hem and edgestitch. To prevent thread from breaking, stretch the fabric slightly when stitching. After stitching, press the hem with steam.



## Finish

- **Press**

Press the whole garment lightly.

## Arrangement

- **Adjusting length & size**

To lengthen or shorten, just draw parallel lines to the hem lines.

If your height is significantly different than our spec, divide pattern in 4 and add/take 1/4 measurement at each line. You may adjust width at the side seams.

- **Adding lining**

Use knit fabric for lining. Use the same patterns for lining. Sew lining the same way as the skirt. Attach lining to skirt, then apply waistband as instructed. (Or sandwich waistband with skirt and lining.)

Make the lining hem length shorter than skirt.